

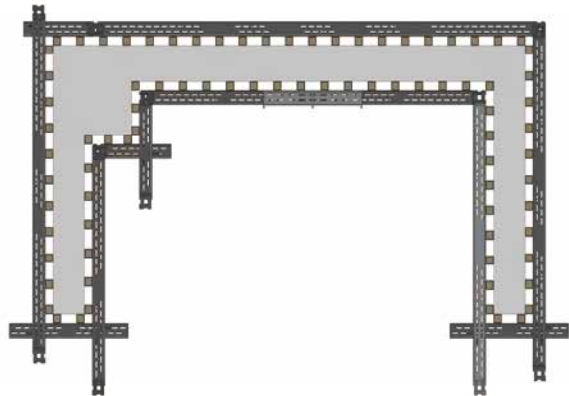
High-Efficiency Beam-Wall-Column Formwork Reinforcement System



Scan to read online

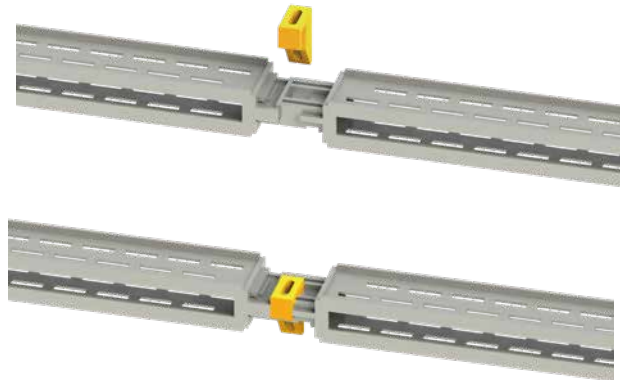
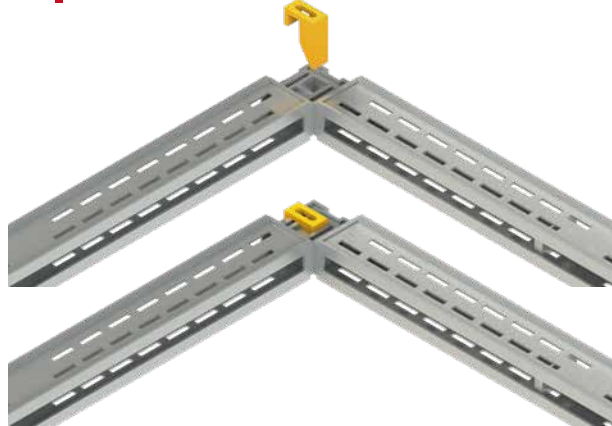
WENMA has been deeply engaged in the construction industry for many years. With profound technical accumulation and rich practical experience, we are always committed to providing innovative and efficient construction solutions for the industry. The High-Efficiency Main Backing Beam System for Beam-Wall-Column Formwork is a star product launched by our company in the field of formwork support, aiming to promote the development of construction towards higher efficiency, precision, and environmental protection.

01| Product Overview



The High-Efficiency Main Backing Beam System for Beam-Wall-Column Formwork is an innovative formwork support system specifically designed for modern construction. Through optimized structural design and carefully selected materials, it provides cost-effective formwork installation solutions for the construction industry, and is widely applicable to the formwork construction of beams, walls, and columns in various construction projects.

02| Core Advantages



Product List	
Waler Connector	Washer
460mm Double I Shaped Waler	U-shaped Pin
660mm Double I Shaped Waler	Flange Pin
860mm Double I Shaped Waler	Locking Wedge
1100mm Double I Shaped Waler	Adjustable Waler for End Plate
1400mm Double I Shaped Waler	U-shaped Beam Clamp
1700mm Double I Shaped Waler	Tie Rod
2000mm Double I Shaped Waler	T-shaped Pin
2300mm Double I Shaped Waler	Outer corner Tensioning
2600mm Double I Shaped Waler	320X320 Corner Connector
2900mm Double I Shaped Waler	400X400 Corner Connector
300mm Waler for Transom	1500mm Waler for Square Column
500mm Waler for Transom	2000mm Waler for Square Column
800mm Waler for End Plate	2500mm Waler for Square Column
1000mm Waler for End Plate	3000mm Waler for Square Column

Outstanding Performance, Stability, and Durability

The system is manufactured from high-strength steel and undergoes galvanization treatment. This not only endows it with excellent mechanical properties and strong load-bearing capacity, enabling it to remain stable under both normal and special working conditions, but also effectively protects it from corrosion. By preventing the reduction in load-bearing capacity caused by rust, the service life of the product is significantly extended, providing long-lasting and solid support for the construction of various building structures.

High Efficiency, Convenience, and Flexible Adaptability

The modular design, combined with quick connectors, makes the installation simple. Without the need for complex training, it significantly improves installation efficiency, increasing it by more than 50% compared to traditional systems. The main backing beam system has strong adjustability. Through a unique mechanism, parameters such as the spacing and angle of the backing beams can be precisely adjusted, perfectly adapting to formworks of beams, walls, and columns with different sizes and shapes, and meeting diverse construction requirements. In addition, the U-shaped beam clamp is designed for single-person operation. With just a common electric wrench to adjust the bottom bolts, the reinforcement of the side formwork of beams can be completed, saving labor and coordination costs, and showing obvious advantages in construction in narrow spaces.



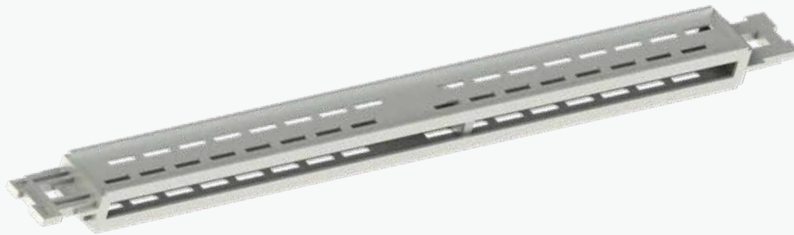
Cost Reduction, Efficiency Improvement, and Environmental Friendliness

By reducing material waste from the design source and decreasing labor requirements through convenient installation, as verified by actual projects, compared with traditional solutions, material costs can be reduced by 30%, and labor costs can be reduced by 50%. Made from recyclable materials, the system causes no pollution during production and use, conforms to green building standards, helps projects obtain green certifications, and enhances the social value and market attractiveness of projects.



Innovative Design with Remarkable Advantages

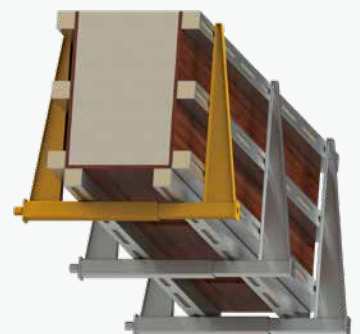
■ **Innovation in Main Keel Structure:** The main keel adopts a double-spliced I-shaped cross-section design. This unique structure significantly enhances the load-bearing capacity of the keel, enabling it to withstand greater construction loads. At the same time, it improves lateral stability, effectively preventing the keel from twisting and deforming during construction, and providing key support for the overall stability of the formwork support system.



■ **Mortise and Tenon-style Keel Extension Technology:** Drawing on traditional mortise and tenon design and combined with U-shaped connecting pins, it enables flexible connection of keels at 180° and 90°, meeting the reinforcement requirements of formworks of different structures. The wedge-shaped structure of the U-shaped connecting pins allows for reliable connection by hammering, ensuring stability in strength and angle.



■ **Features of U-shaped Beam Clamp:** The unique U-shaped structure is adaptable to various beam specifications, with high space utilization. The fully enclosed mechanical transmission is smooth, durable, and has low maintenance costs. Standardized production ensures uniform product precision, suitable for different construction scenarios. The super-strong biting force ensures the stability of the side formwork of beams. Its convenient operation, warehousing, packaging, and transportation reduce comprehensive management costs.



03 | Scope of Application



Commercial Buildings



Residential Buildings



Industrial Plants

This system is widely applicable to commercial buildings (such as shopping malls and office buildings), residential buildings, industrial plants, and infrastructure construction projects such as bridges, tunnels, and subway stations. Regardless of the complexity of the building structure or the harshness of the construction environment, it can operate stably with its excellent performance, ensuring the smooth progress of projects.

Scan to learn more about our products



Finelock M48
System Scaffold



Fineshore M60
Shoring System



Tube and Fittings Scaffold



Steel Scaffold Board



Staircase Towers

V01-082025



Headquarter

Wenma Forming and Shoring Co., Ltd.
E2-16, Binhai International Business Park
199 Haiyuan Road, Binhai New Area,
Tianjin 300451, P.R. of China
+86+13820121101
info@iwenma.cn www.iwenma.cn

Wenma Scaffolding Solutions Co., Ltd.

E2-16, Binhai International Business Park
199 Haiyuan Road, Binhai New Area,
Tianjin 300451, P.R. of China
+86+13820121101
info@iwenma.com www.iwenma.com

Hong Kong, China

Wenma Forming & Scaffolding (H.K.) Limited
UNIT11, 16/F, METROPOLE SQUARE, NO. 2
ON YIU STREET, SHATIN, N.T. HONG KONG
+852-90897537 +852-23682855
info@iwenma.com hk@iwenma.com
www.iwenma.com

Qatar

Wenma Scaffolding Solutions and Services W.L.L.
Regus, Doha Bank Street, Office 201,
Blue Tower, Sword Signal, Bank Street
PO Box 55918, Doha, Qatar
info@iwenma.com www.iwenma.com

Saudi Arabia

Wenma Scaffolding Co., Ltd.
Building 4294, Al khaliq Rd, 7943 Az Zhuhur Dist.,
32423 Office 12 Dammam city, Saudi Arabia
info@iwenma.com www.iwenma.com

Malaysia

Wenma Scaffolding Solutions And Services (M) SDN BHD

A-23-12, The MET Corporate Towers, 20 Jalan
Dutamas 250480 Kuala Lumpur, Malaysia
info@iwenma.com www.iwenma.com

United Arab Emirates

WENMA SCAFFOLDING SOLUTIONS -L.L.C - S.P.C

Saeed Bin Ahmed Al Otaiba, 403St, AL DANAH,
Abu Dhabi, Abu Dhabi
+86+13821934568