



# Project Case

Fineshore™ M60 Shoring System



Scan to read online





## Industrial Factory Building

- TCL CSOT's 8.6th generation oxide semiconductor new display production line
- CALB Xiamen Phase II Lithium Battery Project
- Zhuhai Pingsha Electronics and Electrical Industrial Park Project
- Xiangshan Science and Technology Park General Contracting Project





With the continuous acceleration of China's urbanization process and the transformation and upgrading of its industrial structure, traditional industries are undergoing large-scale modernization to adapt to the evolving business environment and market demands. In particular, industrial infrastructure construction — especially industrial projects — has entered a new phase of development. These types of projects are typically large in scale, with tight construction schedules, strong growth momentum, and vast market potential. Upon completion, they demonstrate significant industrial agglomeration effects as well as notable economic and social benefits.

As a result, professional formwork and scaffolding contracting services that offer All-In-One solutions have become an essential demand for general contractors undertaking such projects.



# Project Case

## Industrial Factory Building



### TCL CSOT's 8.6th generation oxide semiconductor new display production line

The project is located in Huangpu District, Guangzhou, covering an area of approximately 540,000 square meters with a total construction area of about 1,000,000 square meters. It is the world's first production line dedicated to Micro-LED oxide panels, significantly accelerating Guangzhou's efforts to establish itself as the "World Capital of Display Technology."

#### Project Duration:

2021.06-2022.03

#### Project Location:

Huangpu District, Guangzhou

#### Contractor:

- China Construction Eighth Engineering Division Corp. Ltd
- China Construction Fourth Engineering Division Corp.Ltd

**7.1 million m<sup>3</sup>**

Scaffolding Cubic Meters





# Project Case

## Industrial Factory Building



### CALB Xiamen Phase II Lithium Battery Project

**Project Duration:**  
2021.05-2021.11

**Project Location:**  
Min'an Avenue, Xiang'an District,  
Xiamen City

**Contractor:**

- China Construction Second Engineering Bureau Co., Ltd
- CSCEC Strait Construction and Development Co., Ltd.

**144 million m<sup>3</sup>**  
Scaffolding Cubic Meters





# Project Case

## Industrial Factory Building



### Zhuhai Pingsha Electronics and Electrical Industrial Park Project

The Pingsha Electronics and Electrical Industrial Park Project covers a land area of approximately 317,000 square meters and has a total construction area of about 738,000 square meters.

This is currently the largest industrial park project in Guangdong Province in terms of scale, and it is also the largest and most comprehensively equipped industrial space 5.0 project among the ongoing projects in Zhuhai City.

#### Project Duration:

2022.08-2022.12

#### Project Location:

Jinwan District, Zhuhai

#### Contractor:

Jiangsu Xiaozhen Construction Engineering Co., Ltd

**1.5 million m<sup>3</sup>**

Scaffolding Cubic Meters



# Project Case

Industrial Factory Building



## Xiangshan Science and Technology Park General Contracting Project

**Project Duration:**

2022.11-Now

**Project Location:**

Jinwan District, Zhuhai

**Contractor:**

China Construction Eighth Engineering Division Corp. Ltd

**3.66 million m<sup>3</sup>**

Scaffolding Cubic Meters



The project has a total construction area of approximately 133,800 square meters. This project is not only a crucial spatial guarantee for Fucheng to optimize its industrial layout, accelerate industrial upgrading, enhance urban quality, and improve the living environment, but it also serves as a significant strategic support point for comprehensively building "Digital Longhua, Urban Core".







## Logistics Warehousing

- Jiacheng International (Hainan) Multi-functional Smart Logistics Center
- Prologis Fengxi Logistics Center Phase II Project
- Smart E-commerce Operations Logistics Center Main Structure Project
- Yihai Kerry South China Oil & Grain Production and Sales Base Integrated Food Processing Project





In recent years, China's e-commerce industry has experienced rapid growth, presenting unprecedented development opportunities for the warehousing and logistics sector. The tremendous growth momentum of domestic e-commerce platforms such as Alibaba and JD.com has given rise to new concepts and operational methods for modern warehousing and logistics centers. These giants are strategically positioning themselves across the country, creating significant market demand for such projects in the coming years.





## Jiacheng International (Hainan) Multi-functional Smart Logistics Center

**Project Duration:**  
2022.7-2024.1

**Project Location:**  
Laocheng Development Zone, Chengmai  
County, Hainan Province

**Contractor:**  
China Construction Second Engineering  
Bureau Co., Ltd

**1.74 million m<sup>3</sup>**  
Scaffolding Cubic Meters



### Safety Process

The safety of scaffold project is related to the quality of each component, the design of structure and load capacity as well as the behavior of each person at the job site. Therefore, systematically planning and managing every detail is the key to achieving a high level of safety performance. It's on the job site, but not just there. Working with Wenma, we take care of the whole process.



# Project Case

## Logistics Warehousing



### Prologis Fengxi Logistics Center Phase II

**Project Duration:**

2019.4-2020.7

**Project Location:**

Fengxi New City of Xixian New Area

**Contractor:**

Shaanxi Zhongye Transportation and Construction Engineering Co., Ltd.

**100万m<sup>3</sup>**

Scaffolding Cubic Meters



#### Innovative Equipment

Our patented scaffolding equipment serves as the fundamental pillar of safety and efficiency for our clients. We meticulously design, manufacture, and continuously innovate our equipment using state-of-the-art technology to cater to diverse projects and customized requirements of clients. Moreover, we never forget cost control that benefit our clients.





# Project Case

## Logistics Warehousing



### Main Engineering of Smarte-commerce Operation Logistics Center

#### Project Duration:

2023.11-2025

#### Project Location:

Baoan District, Shenzhen

#### Contractor:

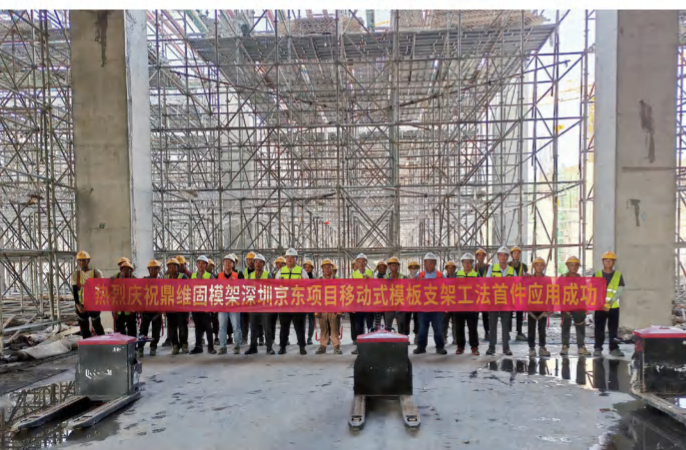
Jiangxi Senteng Construction Co., Ltd

**285 million m<sup>3</sup>**  
Scaffolding Cubic Meters



#### Project Management

Scaffolding contracting services are not only about labor, scaffolders, or installation and dismantling, but also closely related to the success of whole project, requiring professional ability to manage and collaborate with the main contractor and other cross-operators to ensure that the project duration, quality and safety standards are met. To work with Wenma, we take care of all of that.







## Yihai Kerry South China Grain & Oil Base – Comprehensive Food Processing Project

**Project Duration:**

2023.6-2025.4

**Project Location:**

Xiagang Street, Huangpu District,  
Guangzhou City

**Contractor:**

China Construction First Group  
Corporation Limited

**265** million m<sup>3</sup>

Scaffolding Cubic Meters





## Project Case

Rail transit, rolling stock depot



## Rail transit, rolling stock depot

- Binhai Railway Station
- Harbin Station Renovation Project
- Xiamen Rail Transit Line 3 Project - Caicuo Vehicle Base
- Shenyang South Station



# Project Case

Rail transit, rolling stock depot



Urban rail transit has played a significant role in improving the quality and efficiency of urban public transportation, alleviating traffic congestion, guiding the optimization of urban spatial structure, and enhancing the urban environment. At present, an increasing number of cities have opened rail transit lines, with operating mileage and network scale expanding year by year. However, due to the scarcity of land resources, the design of metro depots has shifted toward multi-functional large-scale complexes. In this context, the use of high-rise formwork systems with disk-lock scaffolding and specialized contracting has become a necessity for such projects.





## Binhai Railway Station

**Project Duration:**  
2012.11-2014.04

**Project Location:**  
Tianjin Binhai New Area

**Contractor:**  
China Railway Construction  
Corporation Limited (CRCC)

**64 million m<sup>3</sup>**  
Scaffolding Cubic Meters





# Project Case

Rail transit, rolling stock depot



## Harbin Station Renovation Project

### Project Duration:

2016.08-2018.12

### Contractor:

China Railway Construction Engineering Group

**78** million m<sup>3</sup>

Scaffolding Cubic Meters

Harbin Railway Station serves as a key gateway for economic and trade exchanges between Northeast China and countries in Northeast Asia and Europe. The project includes a northern station building and an elevated station building. The structural system features not only heavy loads but also an irregular load distribution.

### Carefully Planned

Successful projects come from the systematic planning in advance and the meticulous execution of daily work.







## Xiamen Rail Transit Line 3 Project - Caicuo Vehicle Base

**Project Duration:**  
2018.10-2020.02

**Project Location:**  
Xiang'an District, Xiamen City

**Contractor:**  
The Building Construction  
Co.,Ltd.of CTCE Group

**181 million m<sup>3</sup>**

Scaffolding Cubic Meters





# Project Case

Rail transit, rolling stock depot



## Shenyang South Station

Shenyang South Station is a modern, large-scale integrated passenger transportation hub that seamlessly integrates multiple modes of transportation

### Project Location:

Hunnan District, Shenyang City

### Contractor:

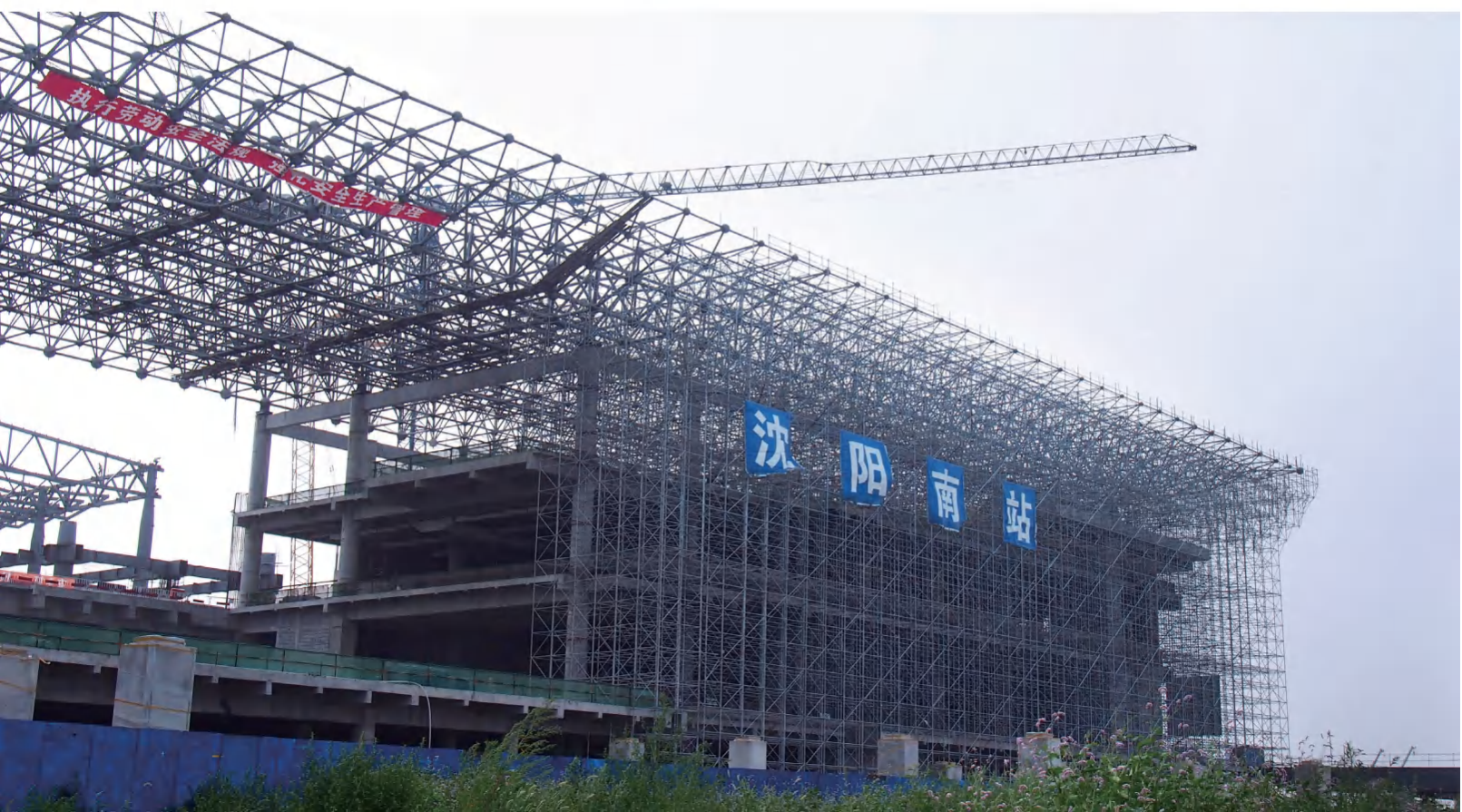
China Railway Construction Engineering Group

**35 million m<sup>3</sup>**

Scaffolding Cubic Meters

### Perfectly Designed

Safety and efficiency result from the perfect combination of scaffolding system, structure and construction scheme design.



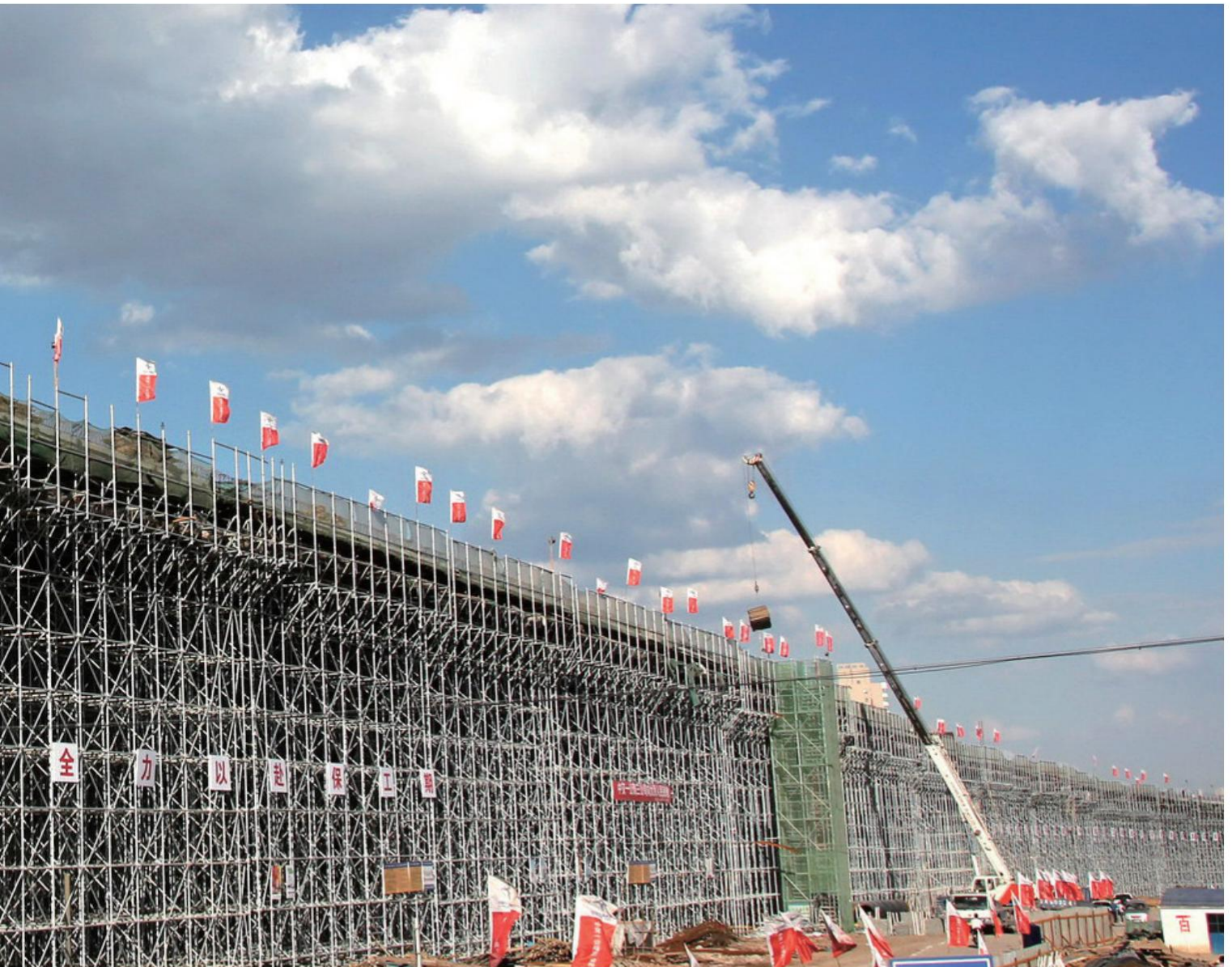




## **Municipal bridges**

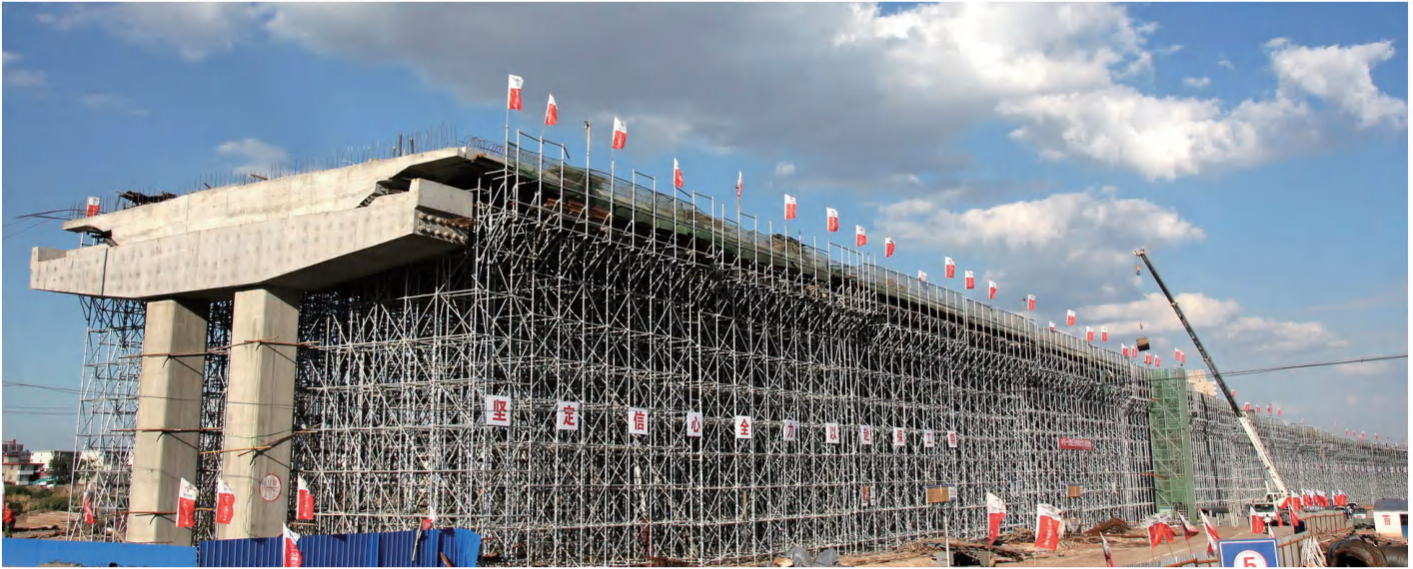
- Taiyuan West Middle Ring Road South Section Completion Project
- Guilong Vertical Line
- Luzhou Tuojiang River Fourth Bridge and Connecting Line Project
- Datong South Middle Ring Expressway Renovation Project
- Guizhou Shuanglong Aviation Port Economic Zone Project





As one of the key drivers promoting the rapid and healthy development of the national economy, road and bridge engineering plays a vital role in the sustained and stable growth of China's economy. In recent years, under the influence of the government's proactive fiscal policies, investments in road and bridge construction projects have repeatedly reached new highs, ushering the industry into a period of rapid development. These projects typically involve tight construction schedules and require high load-bearing capacity of the scaffolding systems.





## Taiyuan West Middle Ring Road South Section Completion Project

**Project Duration:**  
2013.06-2013.10

**Project Location:**  
Taiyuan City, Shanxi Province

**Contractor:**  
No. Three Engineering Co., Ltd. of  
CCCC first Highway Engineering Co., Ltd

**21 million m<sup>3</sup>**

Scaffolding Cubic Meters

### Engineering Design

Equipped with our own in-house CNAS certified laboratory and mechanical structure testing facility, our professional R&D and engineering teams are always ready there to provide you all technical related assistance, such as Static Analysis, Shop Drawings, Assembly Drawings, Technical Documentation, Project Planning and On-site Training, etc.



# Project Case

## Municipal bridges



### Guilong Vertical Line

**Project Duration:**  
2016.05-2018.01

**Project Location:**  
Longli County, Guizhou

**Contractor:**  
Beijing Municipal No.1 Construction  
Engineering Co., Ltd

**5 million m<sup>3</sup>**  
Scaffolding Cubic Meters





## Luzhou Tuojiang River Fourth Bridge and Connecting Line Project

**Project Duration:**  
2016.01

**Project Location:**  
Luzhou City, Sichuan Province

**Contractor:**  
Sichuan Shuohan Construction  
Engineering Co., Ltd

**42 million m<sup>3</sup>**  
Scaffolding Cubic Meters



The Luzhou Tuojiang No. 4 Bridge and its Connecting Road Project has been awarded the "National Quality Engineering Award". The company undertook the construction of Shulü Interchange and Mayuji Interchange.

Among them, the Shulü Interchange is an important node project on the Qianfeng Section, with a total length of 843.505 meters. The Mayuji Interchange is one of the key interchange structures in the entire project.





## Datong South Middle Ring Expressway Renovation Project

**Project Duration:**

2018.07-2019.12

**Project Location:**

YuDong New City DaTong

**Contractor:**

CHINA RAILWAY 17TH BUREAU GROUP CO.,LTD.

**60** million m<sup>3</sup>

Scaffolding Cubic Meters



## Guizhou Shuanglong Aviation Port Economic Zone Project

**Project Duration:**

2018.06-2019.06

**Project Location:**

Nanming District, Guiyang

**Contractor:**

Beijing Municipal No.1 Construction Engineering Co., Ltd

**40** million m<sup>3</sup>

Scaffolding Cubic Meters







## **Airport and station building**

- Qingdao Jiaodong International Airport
- Terminal 3 of Nanning Airport
- Yantai Penglai International Airport



# Project Case

## Airport and station building



As an important transportation hub, airport station buildings can significantly improve the efficiency of cargo transportation and distribution, thus promoting the development of international trade and the logistics industry. The construction of airport stations represents an inevitable choice for China to optimize its transportation structure and adapt to the trends of the times.

These major infrastructure projects are often government-funded, involve high construction complexity, and require professional formwork and scaffolding companies to provide one-stop service solutions.



## 项目案例

机场航站楼

鼎维固  
Wenma



Qingdao Jiaodong International Airport is located within the jurisdiction of Jiaodong Street in Jiaozhou City, With the goal of becoming "nationally first-class and world-leading," Qingdao Jiaodong International Airport is positioned as a regional gateway hub airport, operating at a 4F classification level.



### Qingdao Jiaodong International Airport

#### Project Duration:

2017.07-2019.04

#### Project Location:

Jiaozhou City, Qingdao City

#### Contractor:

China Construction Eighth Engineering Division Corp., Ltd.

Qingdao Yike Road Administration Engineering Co., Ltd.

**30** million m<sup>3</sup>

Scaffolding Cubic Meters

#### Deliverability

When you issue a work ticket, you want the scaffold to be erected or dismantled immediately, we make it happen as your schedule.



## Terminal 3 of Nanning Airport

**Project Duration:**  
2024.03

**Project Location:**  
Wuxu Town, Nanning City

**Contractor:**  
China Construction Second  
Engineering Bureau (Xiamen)  
Construction Co., Ltd.

**199 million m<sup>3</sup>**  
Scaffolding Cubic Meters



## Yantai Penglai International Airport

**Project Duration:**  
2021.08-2022.06

**Project Location:**  
Penglai District, Yantai City

**Contractor:**  
China Construction Eighth  
Engineering Division Corp., Ltd.

**40 million m<sup>3</sup>**  
Scaffolding Cubic Meters







## **Airport and station building**

- Buddhist College of Minnan
- Xiamen Grand Joy City
- Donglin Buddha









## Buddhist College of Minnan

**Project Duration:**

2022.09-2025.01

**Project Location:**

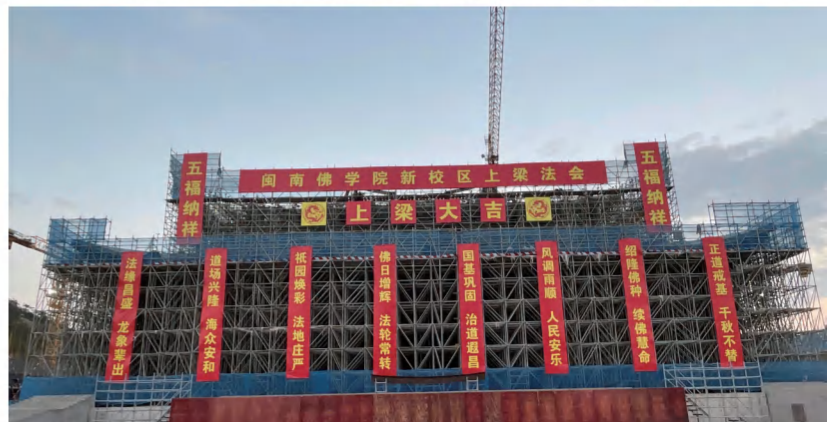
Xiang'an District, Xiamen City

**Contractor:**

China Construction Second Engineering  
Bureau (Xiamen) Construction Co., Ltd.

**51** million m<sup>3</sup>

Scaffolding Cubic Meters





# Project Case

## Other Types



### Xiamen Grand Joy City

**Project Duration:**  
2022.08-2023.12

**Project Location:**  
Jimei CBD Xinglin Bay Core Area

**Contractor:**  
China Construction Second  
Engineering Bureau (Xiamen)  
Construction Co., Ltd.

**80 million m<sup>3</sup>**

Scaffolding Cubic Meters







## Donglin Buddha

**Project Duration:**

2016.08-2017.12

**Project Location:**

Lushan Mountain Foothills, Wenquan  
Town, Lushan City, Jiangxi

**Contractor:**

Construction Office of Donglin Monastery,  
Lushan Mountain, Jiujiang, Jiangxi

**6 million m<sup>3</sup>**

Scaffolding Cubic Meters





# To Support a Better World Build and Safeguard Happy Life



V01-072025

## Headquarter

### Wenma Forming and Shoring Co., Ltd.

E2-16, Binhai International Business Park,  
199 Haiyuan Road, Binhai New Area,  
Tianjin 300451, P.R. of China  
+86+13820121101  
info@iwenma.cn  
www.iwenma.cn

### Wenma Scaffolding Solutions Co., Ltd.

E2-16, Binhai International Business Park,  
199 Haiyuan Road, Binhai New Area, Tianjin  
300451, P.R. of China  
+86+13820121101  
info@iwenma.com  
www.iwenma.com

## Hong Kong, China

### Wenma Forming & Scaffolding (H.K.) Limited

Unit11, 16/F, Metropole Square, No. 2 On Yiu Street,  
Shatin, N.T., Hong Kong  
+852-90897537 +852-23682855  
info@iwenma.com hk@iwenma.com  
www.iwenma.com

## Malaysia

### Wenma Scaffolding Solutions And Services (M) SDN BHD

A-23-12 Menara The Met, Block A Level 23, Menara  
The Met, No 20 Jalan Dutamas 2, 50480 Kuala Lumpur  
info@iwenma.com www.iwenma.com

## United Arab Emirates

### Wenma Scaffolding Solutions - L.L.C. - S.P.C

Saeed Bin Ahmed Al Otaiba, 403St, AL DANAH, Abu Dhabi, Abu Dhabi  
+86-13821934568

## Qatar

### Wenma Scaffolding Solutions and Services W.L.L.

3rd floor Room No: 307, Building No.8, Street No.820,  
Zone No.18, PO Box 47570,Doha, Qatar  
+974-40207526 +974-44315667  
info@iwenma.com www.iwenma.com

## Saudi Arabia

### Wenma Scaffolding Co., Ltd.

Building 4294, Al khaliij Rd, 7943 Az Zhuhur Dist.,  
32423 Office 12 Dammam city , Saudi Arabia  
info@iwenma.com www.iwenma.com