

Customized Steel Formwork Solutions

Empowering Engineering Excellence



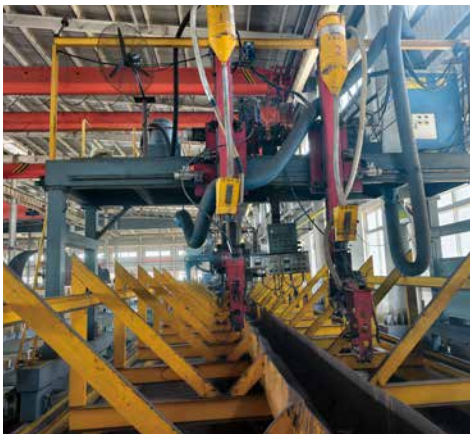
Scan to read online



As a professional steel formwork manufacturer, WENMA has been deeply rooted in the industry for years. With outstanding technical capabilities and extensive practical experience, we offer comprehensive customized steel formwork services. Equipped with an industry-leading matrix of formwork processing equipment, we meticulously control every step from design and production to after-sales service, ensuring high-quality products delivered with robust capabilities.

Advanced Equipment: The Pillar of Intelligent Manufacturing

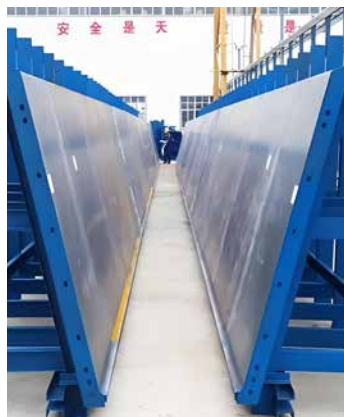
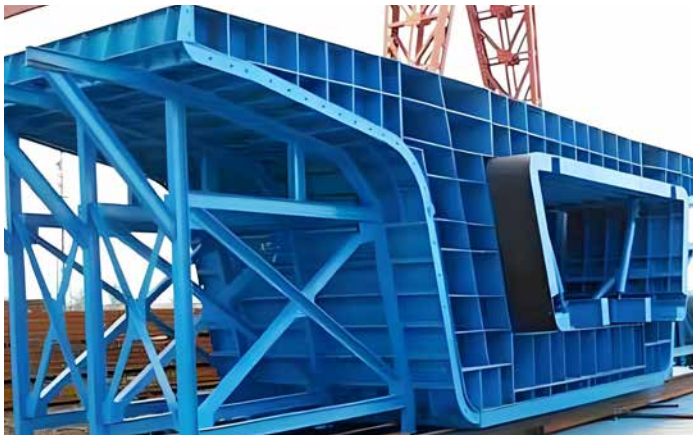
Our company is equipped with Assembly and Straightening Integrated Machines, enabling one-stop formwork assembly and straightening, significantly enhancing production precision and efficiency. The Laser Cutting Machines achieve micron-level precision, perfectly handling complex shaping requirements. Welding Robots utilize automated welding processes to ensure uniform and sturdy welds, enhancing the overall stability of formworks. The combination of Presses and Bending Machines efficiently completes stamping and bending processes for metal sheets, catering to diverse structural needs. Press Die Machines precisely shape formwork details, ensuring excellent molding quality. CNC Plate Rolling Machines accurately roll steel plates into various curved components, suitable for tunnels, culverts, and other specialized scenarios. The coordinated operation of these advanced devices provides robust technical support for all types of customized steel formworks.





Diverse Customization: Meeting All Scenario Requirements

In the field of bridge construction, we supply formworks for high-speed railway and highway bridge piers and box girders, ensuring stable bridge structures and aesthetically pleasing finishes. For tunnel and culvert projects, our customized formworks are tailored to different geological and construction requirements, guaranteeing safe and efficient construction. Additionally, we excel in solving complex structural challenges. Whether it's formworks for various special-shaped columns and beams, T-beam formworks, cap beam formworks, crash barrier formworks, or hollow slab formworks, we can precisely meet unique design needs and create distinctive architectural forms.





We always prioritize customer needs. Relying on advanced equipment and sophisticated craftsmanship, we rigorously control every aspect from design and production to after-sales service, ensuring top-notch product quality and service. Choosing WENMA means choosing professional and reliable customized steel formwork solutions. We look forward to collaborating with you to create more outstanding projects!

Scan to learn more about our products



Finelock M48 System Scaffold



Fineshore M60 Shoring System



Tube and Fittings Scaffold



Steel Scaffold Board



Staircase Towers



High-Efficiency Main Backing Beam System for Beam-Wall-Column Formwork



Headquarter

Wenma Forming and Shoring Co., Ltd.

E2-16, Binhai International Business Park 199 Haiyuan Road,
 Binhai New Area, Tianjin 300451, P.R. of China
 info@iwenma.cn www.iwenma.cn

Wenma Scaffolding Solutions Co., Ltd.

E2-16, Binhai International Business Park 199 Haiyuan Road,
 Binhai New Area, Tianjin 300451, P.R. of China
 info@iwenma.cn www.iwenma.cn

Hong Kong, China

Wenma Forming & Scaffolding (H.K.) Limited

UNIT 11, 16/F, METROPOLE SQUARE, NO. 2 ON YIU STREET, SHATIN, N.T. HONG KONG
 +852-90897537 +852-23682855
 info@iwenma.com hk@iwenma.com
 www.iwenma.com

Saudi Arabia

Wenma Scaffolding Co., Ltd.

Building 4294, Al khaliq Rd, 7943 Az Zhuhur Dist., 32423 Office
 12 Dammam city, Saudi Arabia
 info@iwenma.com www.iwenma.com

Qatar

Wenma Scaffolding Solutions and Services W.L.L.

307, Building No.8, Street No.820, Zone No.18, PO Box
 47570, Doha, Qatar
 +974-40207526 +974-44315667
 info@iwenma.com www.iwenma.com

Malaysia

Wenma Scaffolding Solutions And Services (M) SDN. BHD.

A-23-12 Menara The Met, Block A Level 23, Menara
 The Met, No 20 Jalan Dutamas 2, 50480 Kuala Lumpur
 info@iwenma.com www.iwenma.com

United Arab Emirates

WENMA SCAFFOLDING SOLUTIONS - L.L.C - S.P.C

Saeed Bin Ahmed Al Otaiba, 403St, AL DANAH, Abu Dhabi,
 Abu Dhabi
 +86-13821934568